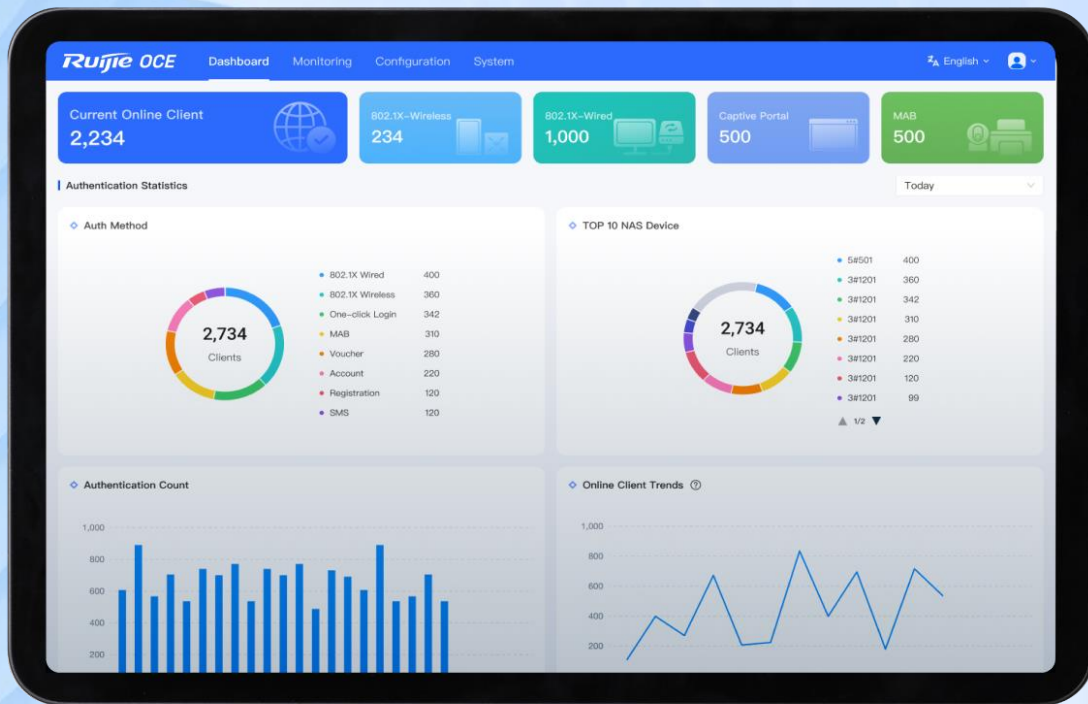


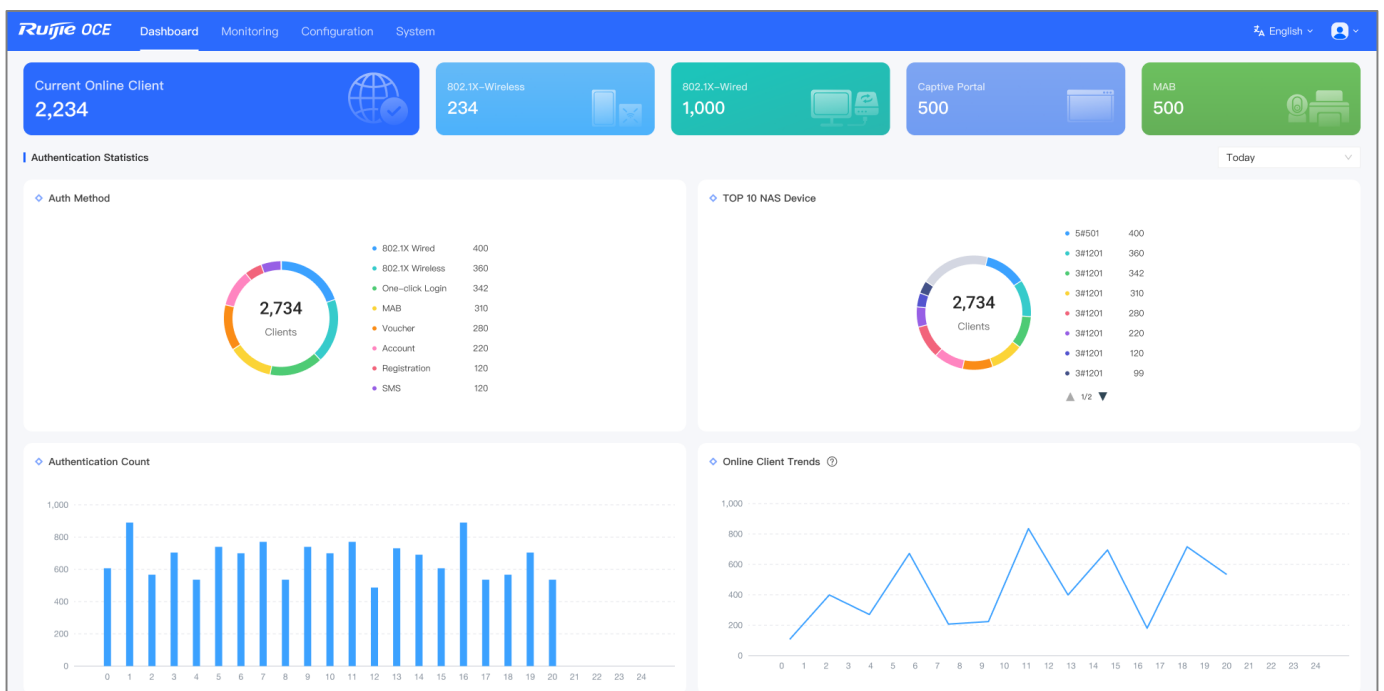
RG-OCE Identity Manager



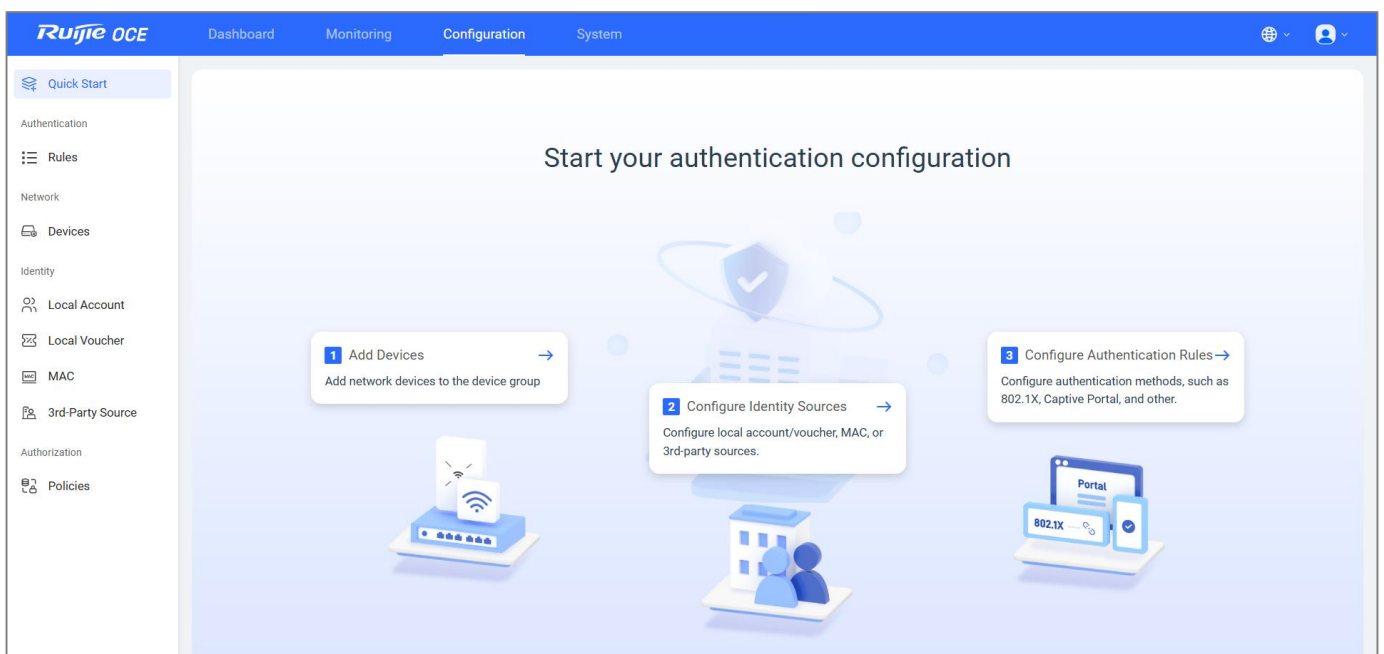
01 Product Overview

The Ruijie Omni-Control Engine (Abbreviation: RG-OCE) is an on-premises platform of Ruijie public cloud. It consists of two components: The RG-OCE Identity Manager for identity authentication, known as Network Access Control (NAC) or Authentication, Authorization, Accounting (AAA) built with a RADIUS server, and The RG-OCE Network Manager for network device management, known as NMS server. The RG-OCE can be easily installed on physical servers or VMware vSphere Hypervisor(ESXi), Microsoft Hyper-V, Centos KVM, Amazon EC2 and Microsoft Azure.

The RG-OCE Identity Manager features an innovative UI and simple configuration steps. It supports both wireless and wired 802.1X authentication, as well as captive portal authentication. It also provides easy access control with MAB authentication for IoT devices. It supports multiple authentication and authorization sources (local account/AD/LDAP), and can easily integrate with existing data sources. Besides, it offers rich authorization polices, including dynamic VLAN assignment, QoS, concurrent users, traffic usage, and time period control, along with flexible portal authentication methods.



RG-OCE Identity Manager Dashboard Page



RG-OCE Identity Manager Configuration Home Page

02 Product Highlights

2.1 On-Premises Deployment

- Software installed on a local server
- High-security data protection
- Supports deployment on the VMware ESXi and physical deployment
- Supports Ruijie, Reyee and third-party devices (802.1X)

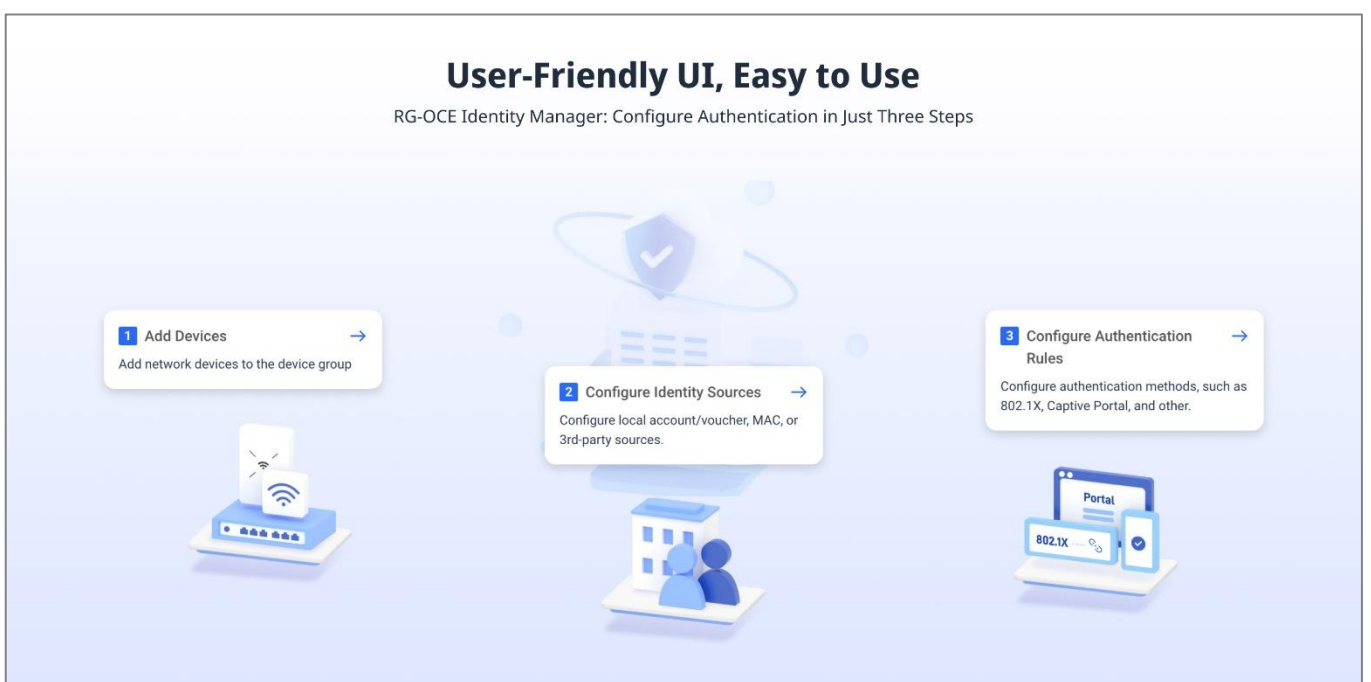


**Ruijie OCE
On-premises
Authentication
Module**

- On-premises Deployment**
Secure and Reliable
- Supports
300 to 10,000 Users
- Standalone Deployment**
Installed in minutes

2.2 User-friendly UI

- Simple configuration of authentication policies for network devices in three steps
- Intuitive dashboard and real-time status monitoring
- Easily locate authentication exceptions and visibility on 802.1x requests



User-Friendly UI, Easy to Use
RG-OCE Identity Manager: Configure Authentication in Just Three Steps

- 1 Add Devices** →
Add network devices to the device group
- 2 Configure Identity Sources** →
Configure local account/voucher, MAC, or 3rd-party sources.
- 3 Configure Authentication Rules** →
Configure authentication methods, such as 802.1X, Captive Portal, and other.

2.3 Flexible Authentication Methods

- Wireless and wired 802.1X, and captive portal authentication
- 802.1X with dynamic VLAN assignment
- MAB authentication for IoT devices
- Supports multiple authentication and authorization sources (local account/AD/LDAP)

Flexible Intergration with Third-Party Identity Sources & Visualized User Group Role Mapping

Support seamless integration with AD and LDAP account identity sources.

Visualize role mapping of user groups based on AD/LDAP identity sources.

2.4 Rich Authorization Control Policies

- Control of concurrent online clients
- Valid time period control
- Valid traffic quota control
- Dynamic QoS
- Dynamic VLAN assignment

Rich Authorization Policies Configured in One Step

Manage concurrent users, period, and traffic quota based on user roles.
 Support QoS rate limiting based on user roles.
 Support dynamic VLAN assignment based on user roles.

Policy Name	Concurrent devices	Period	Quota	QoS	VLAN	Action
Rate limited	1			1 Mbps ↑ 1 Mbps	–	🗑️
Test B	3			Unlimited ↑ Unlimited	10	🗑️
TestA	1			Unlimited ↑ Unlimited	–	🗑️
StudentPolicy_VLAN10	3			Unlimited ↑ Unlimited	10	🗑️
reyee limit	3			1 Mbps ↑ 1 Mbps	–	🗑️
TeacherPolicy_VLAN50	3			Unlimited ↑ Unlimited	50	🗑️
mstestPL	1			Unlimited ↑ Unlimited	1	🗑️
HQ	3			20 Mbps ↑ 10 Mbps	10	🗑️
StudentPolicy	3			Unlimited ↑ Unlimited	–	🗑️
TeacherPolicy	3			Unlimited ↑ Unlimited	–	🗑️

Add Authorization Policy

* Policy Name:

Concurrent devices:

Period:

Quota:

Radius Dynamic CoA: QoS VLAN

QoS

Maximum download rate:

Maximum upload rate:

VLAN 802.1X

* VLAN:

Cancel OK

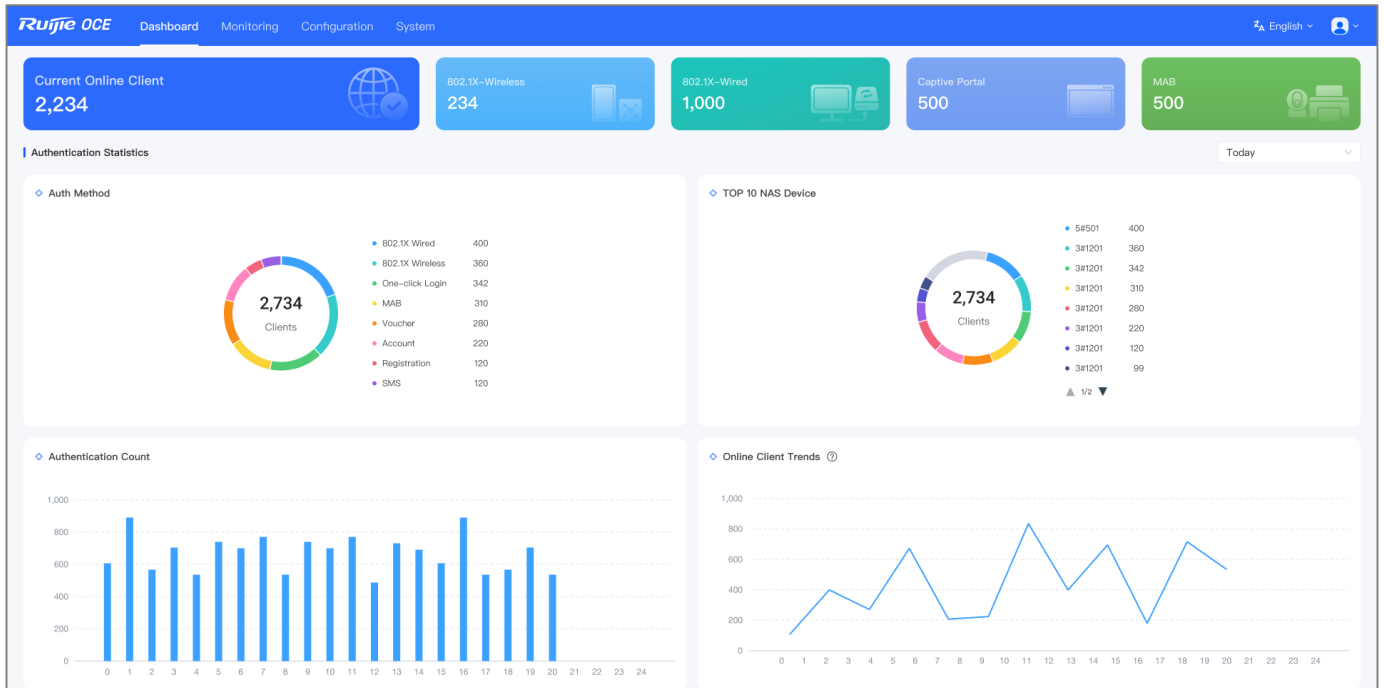
2.5 Marketing Campaign & Captive Portal

- Integrated captive portal module, supporting One-Click, Voucher, SMS Code, Account login and Email registration methods
- Supports rich customization options for the captive portal page, such as background image, logo, welcome text, advertisement images or video, and button styles
- Supports 10+ languages for the portal page, and flexible customization of the page language

03 Product Features

3.1 Dashboard Monitoring

The RG-OCE Identity Manager Dashboard provides a clear view of the current number of authenticated clients and the distribution of authentication methods, including the trends in authenticated clients and the peak and off-peak periods.



3.2 Authentication Activity Monitoring

The RG-OCE Identity Manager displays online and offline authenticated clients and records login events. It includes the Event Viewer menu for monitoring exception activity, and the Debug Log menu for easily locating issues by collecting debugging logs.

The 'Authenticated Clients' page provides a detailed view of active and inactive users. It includes a search bar, filters, and a table of client details.

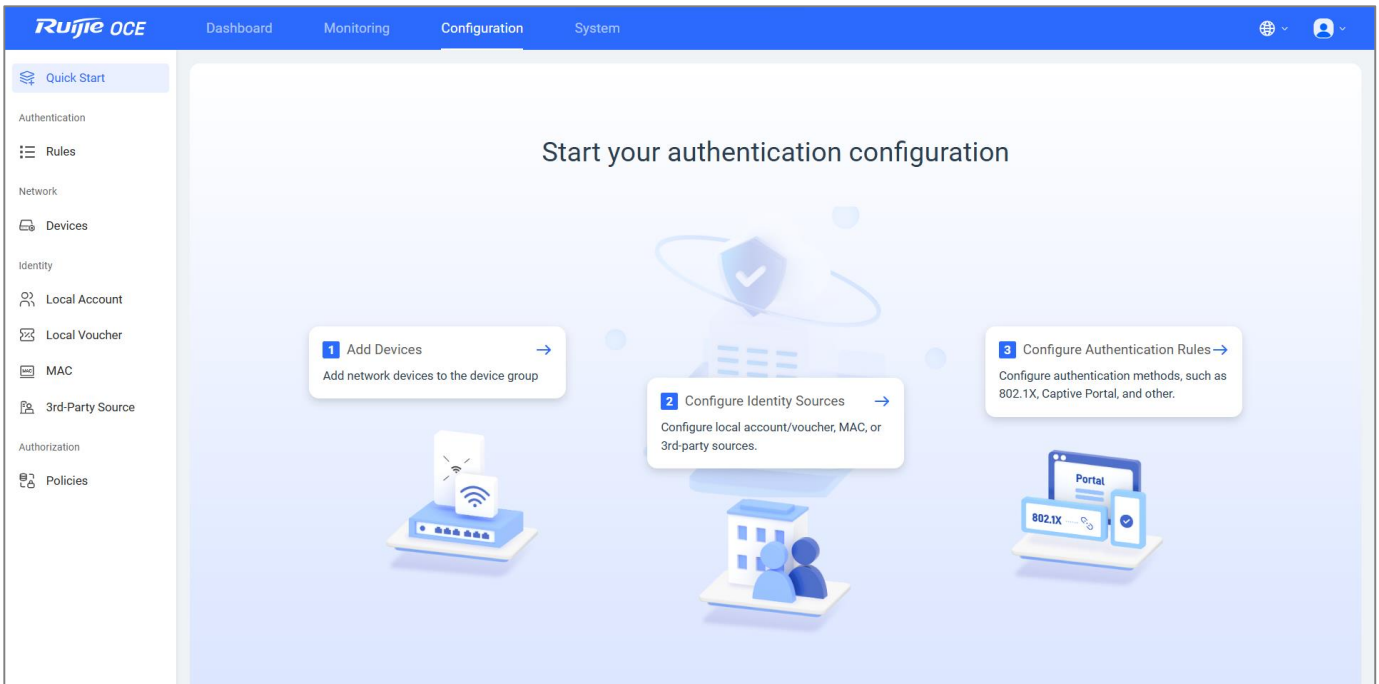
Status	Account	IP	Client MAC	Auth Method	First Online	Last Online	Device MAC	Device Group	Device SN	Device IP	Action
Offline	11111111	192.168.112.99	464b.1375.822a	802.1x Wireless	2024-08-15 15:00:17		F0:74:8D:09:B7:F0			192.168.112.13	
Online	11111111	192.168.112.8	6ec8.b5f9.3f0f	802.1x Wireless	2024-08-15 14:56:05		10:82:3D:58:15:F3			192.168.112.16	🔒
Offline	far1	192.168.110.19	46ee.1b5e.5e2c	802.1x Wireless	2024-08-15 12:57:22		10:82:3D:62:12:18			192.168.110.23	
Offline	1x_001	192.168.110.59	468e.d3e9.553f	802.1x Wireless	2024-08-15 10:00:24		00:D0:F8:22:33:44	MACC197341973		192.168.110.13	
Offline	15	192.168.110.58	569c.5749.2ec8	802.1x Wireless	2024-08-14 14:05:53		00:D0:F8:22:33:44	MACC197341973		192.168.110.13	
Offline	11111111	192.168.160.31	76b2.59fd.38b7	802.1x Wireless	2024-08-14 11:35:55		58:69:6C:29:83:98			192.168.112.7	
Offline	portal001	192.168.110.56	c62c.53ed.12bc	Account	2024-08-13 19:19:00		-	MACC197341973		-	
Offline	11111111111111111111111111111111	192.168.110.61	be65.f933.b3c3	Account	2024-08-12 19:20:53		-	MACC197341973		-	
Offline	11111111	192.168.112.51	9017.c8df.dfaa	802.1x Wireless	2024-08-12 18:09:39		10:82:3D:58:15:F3			192.168.112.15	
Offline	11111111	192.150.1.188	1683.0bcb.4460	802.1x Wireless	2024-08-12 16:55:09		00:D0:F8:15:08:03			192.168.112.113	

14957 in total | 1 2 3 4 5 ... 1496 | 10 / page | Go to

3.3 Easy-to-Use Authentication Rules

Configure captive portal and 802.1x authentication rules in just three steps.

- Step 1. Add devices and assign them to respective device groups.
- Step 2. Configure identity sources, which can be local accounts or third-party data sources.
- Step 3. Enable authentication methods, select identity sources, and apply them to device groups.



Authentication Rules

Buttons: + Add Rule, Batch Delete

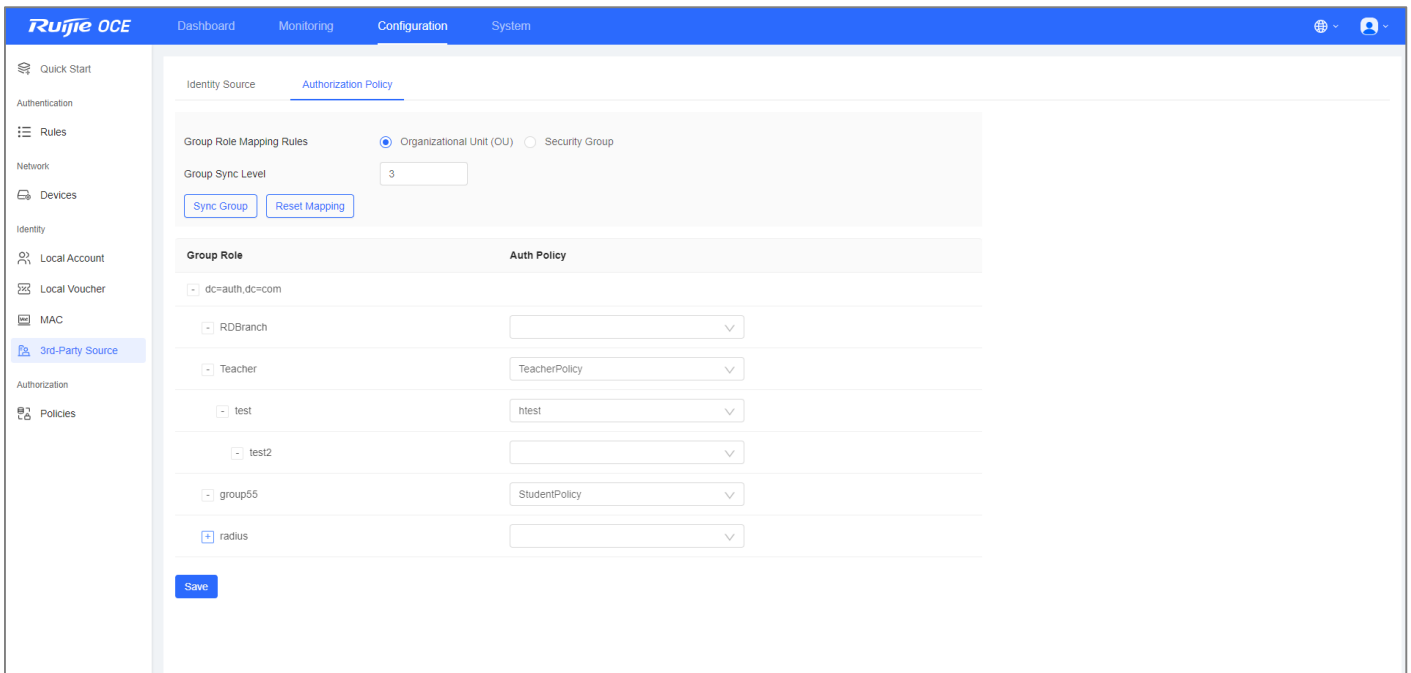
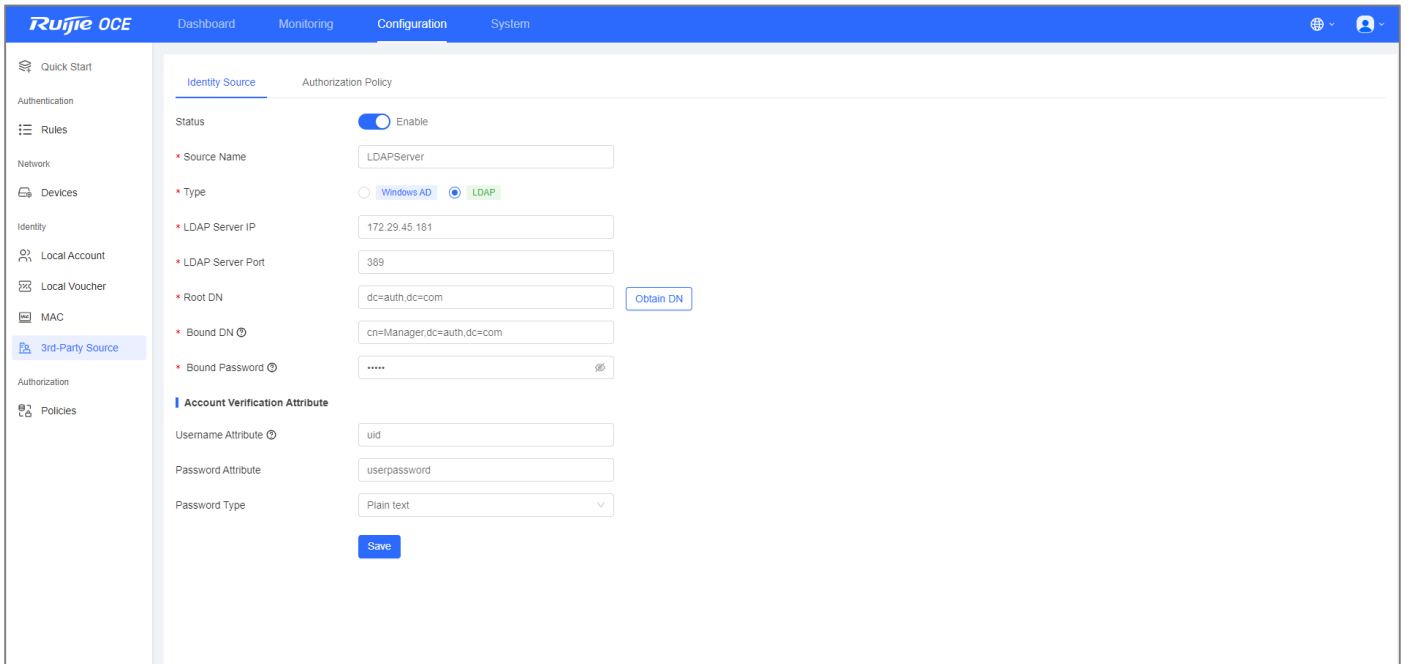
Search: Rule Name

Rule Name	Auth Method	Identity Source	Bind Device Group	Action
<input type="checkbox"/> HK-RULES	Captive Portal	ACCOUNT Local Account	1	
<input type="checkbox"/> hbTest	Captive Portal	ACCOUNT Local Account	1	
<input type="checkbox"/> 01010	802.1X	ACCOUNT Local Account, MAC Local MAC, LDAP LDAPServer	1	
<input type="checkbox"/> portal001	Captive Portal	ACCOUNT Local Account, VOUCHER Local Voucher	0	
<input type="checkbox"/> 1x_testing	802.1X	ACCOUNT Local Account, MAC Local MAC, LDAP LDAPServer	0	
<input type="checkbox"/> vac	Captive Portal	ACCOUNT Local Account, VOUCHER Local Voucher	0	
<input type="checkbox"/> cwI_test	802.1X	ACCOUNT Local Account, MAC Local MAC, LDAP LDAPServer	0	
<input type="checkbox"/> lwz-gonwei	802.1X	ACCOUNT Local Account, MAC Local MAC, LDAP LDAPServer	0	
<input type="checkbox"/> Guest-Portal	Captive Portal	ACCOUNT Local Account, VOUCHER Local Voucher	0	
<input type="checkbox"/> 802.1xrule	802.1X	ACCOUNT Local Account, MAC Local MAC, LDAP LDAPServer	0	

39 in total < 1 2 3 4 > 10 / page Go to

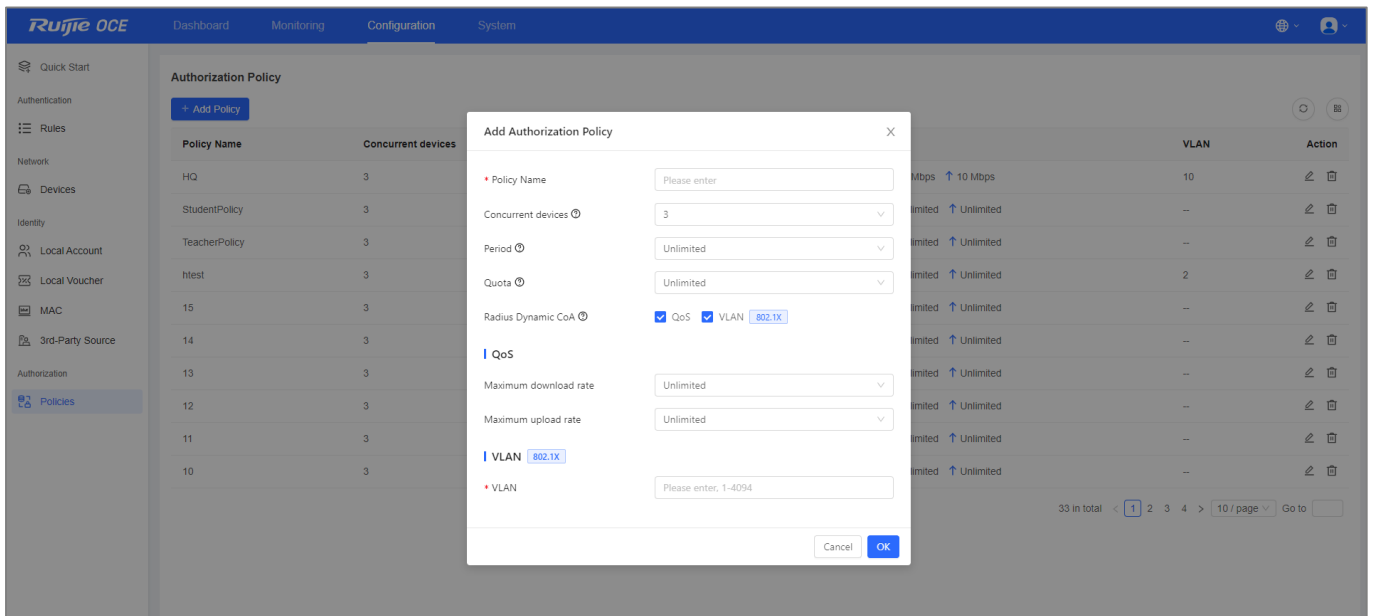
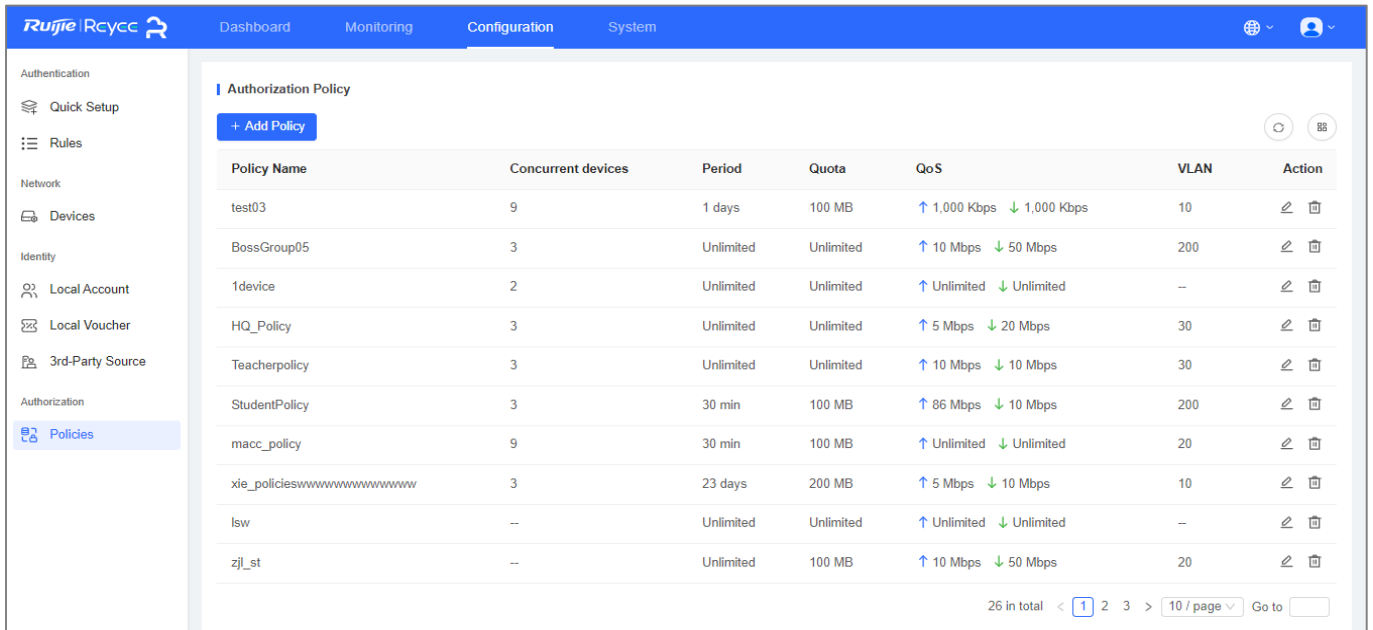
3.4 Rich Identity Sources

The RG-OCE Identity Manager supports local accounts as well as third-party Microsoft AD and LDAP data sources. It can read AD/LDAP data source groups, and perform role authorization mapping through a visual interface.



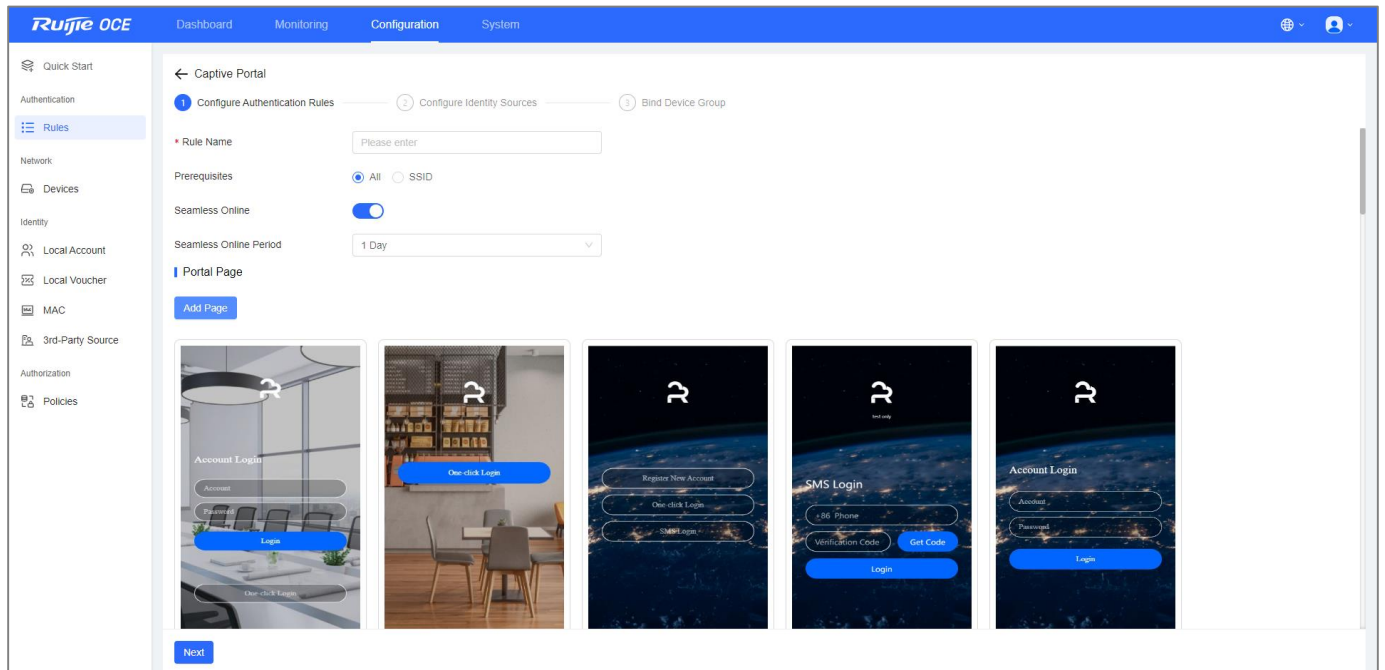
3.5 Comprehensive Authentication Policies

The RG-OCE Identity Manager supports comprehensive policies for captive portal and 802.1X authentication. It supports control over concurrent clients, time period, traffic quota, QoS (uplink & downlink speed) and dynamic VLAN assignment.



3.6 Flexible Captive Portal

The RG-OCE Identity Manager Identity Manager provides flexible portal authentication policies, and integrates with Ruijie and Reeye access points and gateways. It supports portal page customization and multiple authentication methods, including One-click login, Voucher, Account, Registration and SMS. The portal supports multiple languages and advertising functions. Customers can easily add multiple advertising pictures or video for marketing.



Portal Page

Portal Basic Settings

Portal Name:

Login Options:

- One-click Login
- Access Duration (Min): Unlimited 15 30 60 Custom
- Voucher
- Account
- SMS
- Registration
- Facebook Account

Show Balance Page: Available only when Auth server supports the function

Post-login URL:

Portal Visual Settings

Logo:

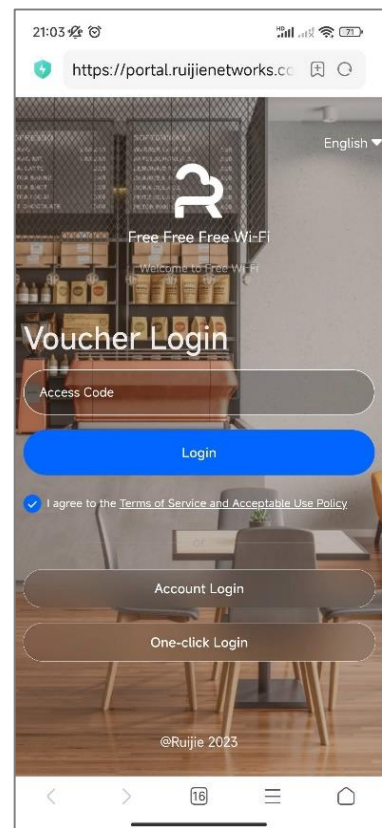
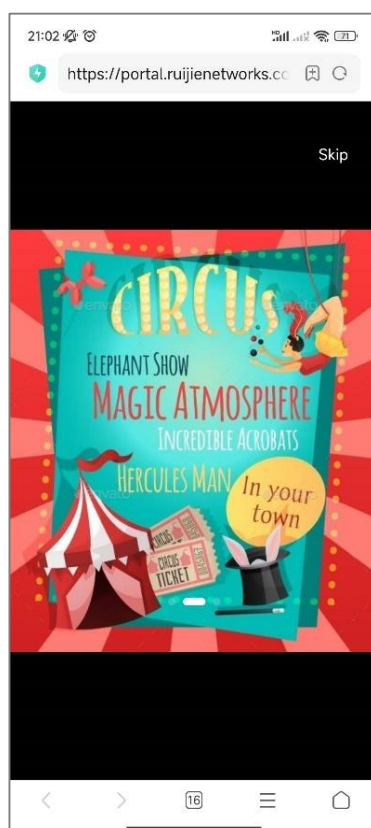
Logo Image:

Logo Position:

Background: Picture Solid Color

Background Image:

Mobile Desktop



04 Product Specifications

Specifications	RG-OCE Identity Manager	Ruijie Public Cloud
Deployment Mode:		
Tenant and role based sub-accounts (suitable for on-premises deployment)	√	√
Redundancy in cluster deployment	√	√
Secure data transmission	√	√
Local database deployment	√	×
Statistics and Monitoring:		
Current online clients	√	√
Client authentication methods & statistics	√	×
Client online and authentication request trend	√	×
Event Viewer and Debug Log	√	×
Authentication Methods:		
Wireless and wired 802.1X	√	×
MAB authentication	√	×
Captive portal authentication (One-Click, Voucher, Account, SMS and Email Registration, etc.)	√	√
802.1X authentication with dynamic VLAN assignment	√	×
Account Identity Sources:		
Local account & MAC	√	√
Microsoft AD & LDAP integration	√	×
Authorization Policies:		
Control of concurrent online clients	√	√
Time period control	√	√

Specifications	RG-OCE Identity Manager	Ruijie Public Cloud
Authorization Polices:		
Traffic quota control	√	√
RADIUS dynamic VLAN assignment	√	×
QoS	√	√
RADIUS CoA and DM	√	×
Troubleshooting Tools:		
802.1X Event Viewer	√	×
802.1X authentication debug log	√	×
802.1X authentication request simulator	√	×
AD/LDAP connectivity test	√	×
Server one-click fault collection	√	√
System Management:		
Role-based privilege management (sub-accounts)	√	√
License management	√	×
Account multi-language support	√	√
Open API (RESTful API)	√	√
Server Capacity:		
Maximum online concurrent clients	10,000+, based on hardware	Subject to specific projects
Technical Support:		
Online document support	√	√
Online RITA support	√	√

05 Supported Models

Series	Models	Portal Authentication	802.1X Authentication
AP/AC	AP8xx Series, AP6xx Series, AP720-L, AP180P-L, AP180, RAP73Pro, WS6008, WS6512, and WS6108	Y	Y
Switches	CS83, CS85, CS86, S2915L and NBR3300, NBR5500 Series	N	Y
Routers	EG1510XS, NBR6120-E, NBR6205-E, NBR6210-E, NBR6215-E	Y	N/A

06 Ordering Information

Model	Description
RG-OCE Identity Manager On-Premises Platform License	
RG-OCE-IDENTITY-BASE	The RG-OCE Identity Base license supports 20 concurrent online clients (Note that if the demo license expires and the Base License is not installed, the system will no longer be operational)
Concurrent Online Clients License	
RG-OCE-IDENTITY-LIC-100	Support 100 concurrent online clients throughout the software's lifecycle (including 802.1X, Portal, and MAB clients)
RG-OCE-IDENTITY-LIC-500	Support 500 concurrent online clients throughout the software's lifecycle (including 802.1X, Portal, and MAB clients)
RG-OCE-IDENTITY-LIC-1000	Support 1,000 concurrent online clients throughout the software's lifecycle (including 802.1X, Portal, and MAB clients)
RG-OCE-IDENTITY-LIC-5000	Support 5,000 concurrent online clients throughout the software's lifecycle (including 802.1X, Portal, and MAB clients)

07 More Information

For more information about Ruijie Cloud, please visit <https://reyee.ruijie.com/en-global/products/sme/network-management-control/oce-identity-manager/> or contact your local Ruijie sales representative.

Ruijie



Ruijie Networks Co., Ltd.

For more information, visit www.ruijienetworks.com or call 86-400-620-8818.

<https://Reyee.Ruijie.com>